



**ALASKA DIVISION OF HOMELAND SECURITY &
EMERGENCY MANAGEMENT**

SITUATION REPORT 23-265 • September 22, 2023



Toll-Free 1.800.478.2337

Anchorage Area 907.428.7000

SEOC 907.428.7100

<p><u>SEOC Preparedness Level</u></p> <p>Level 1 - Routine Operations</p>	<p align="center">http://ready.alaska.gov</p>	<p><u>National Terrorism Advisory System:</u></p> <p>Read the NTAS Bulletin here</p>
<p><u>Maritime Security (MARSEC)</u> Level:1- Minimum Appropriate Security Measures</p>	<p align="center">WHO Novel Coronavirus Pandemic (COVID-19):</p> <p align="center">2019 Novel Coronavirus</p>	<p><u>Alaska Military Installation Force Protection Level:</u> FPCON Bravo</p>

(Significant changes from previous situation reports are red.)

Significant Issues:

Juneau Suicide Basin Flooding:

State disaster Individual Assistance registration continues to be available through telephone and web site. The deadline to apply is October 9,2023.

Web Site for IA Registration for the Juneau disaster is: <https://ready.alaska.gov/Recovery/IA>

IA Hotline: 1-(844)-445-7131.

State of Alaska Department of Health (DOH)

The DOH stands ready to assist with all aspects of public health and in the event of a public health emergency, supported by the SEOC and other state departments as required. For current information, see:

<https://health.alaska.gov/dph/Pages/default.aspx>

<https://health.alaska.gov/dph/Emergency/Pages/prepared/default.aspx>

NTAS Bulletin

The U.S. Department of Homeland Security has issued an updated National Terrorism Advisory Bulletin. The updated bulletin can be viewed at the below link.

To read current or expired advisories, click the link below:

<https://www.dhs.gov/national-terrorism-advisory-system>

Travel Alerts and Conditions

Be aware that **Taylor Creek Bridge**, on the Taylor Highway, approximately 10-miles South of Chicken, will be closed to all traffic and pedestrians beginning Wednesday 9/20 through Sunday 9/24 at 3:00 PM. Please plan accordingly.

For current driving conditions dial 511 or link to <https://511.alaska.gov/>

Barry Arm Landslide / Tsunami Risk

For the latest information on the Barry Arm Landslide and Tsunami risk, click here:
<https://dggs.alaska.gov/hazards/barry-arm-landslide.html>

Recent Earthquakes

USGS Earthquake Information: <http://earthquake.usgs.gov/>
National Tsunami Warning Center: <http://tsunami.gov/>

Alaska Volcanoes

Great Sitkin Alert Level: **Watch** and Aviation Color Code: **Orange**
Shishaldin Alert Level: **Watch** and Aviation Color Code: **Orange**
Trident Alert Level: **Advisory** and Aviation Color Code: **Yellow**
For Alaska Volcano updates, go to: <https://www.avo.alaska.edu/>

Air Quality Index (AQI) Advisories

No current alerts.
For the most up to date Air Quality Index Advisories:
<http://dec.alaska.gov/Applications/Air/airtoolsweb/Home/Index>

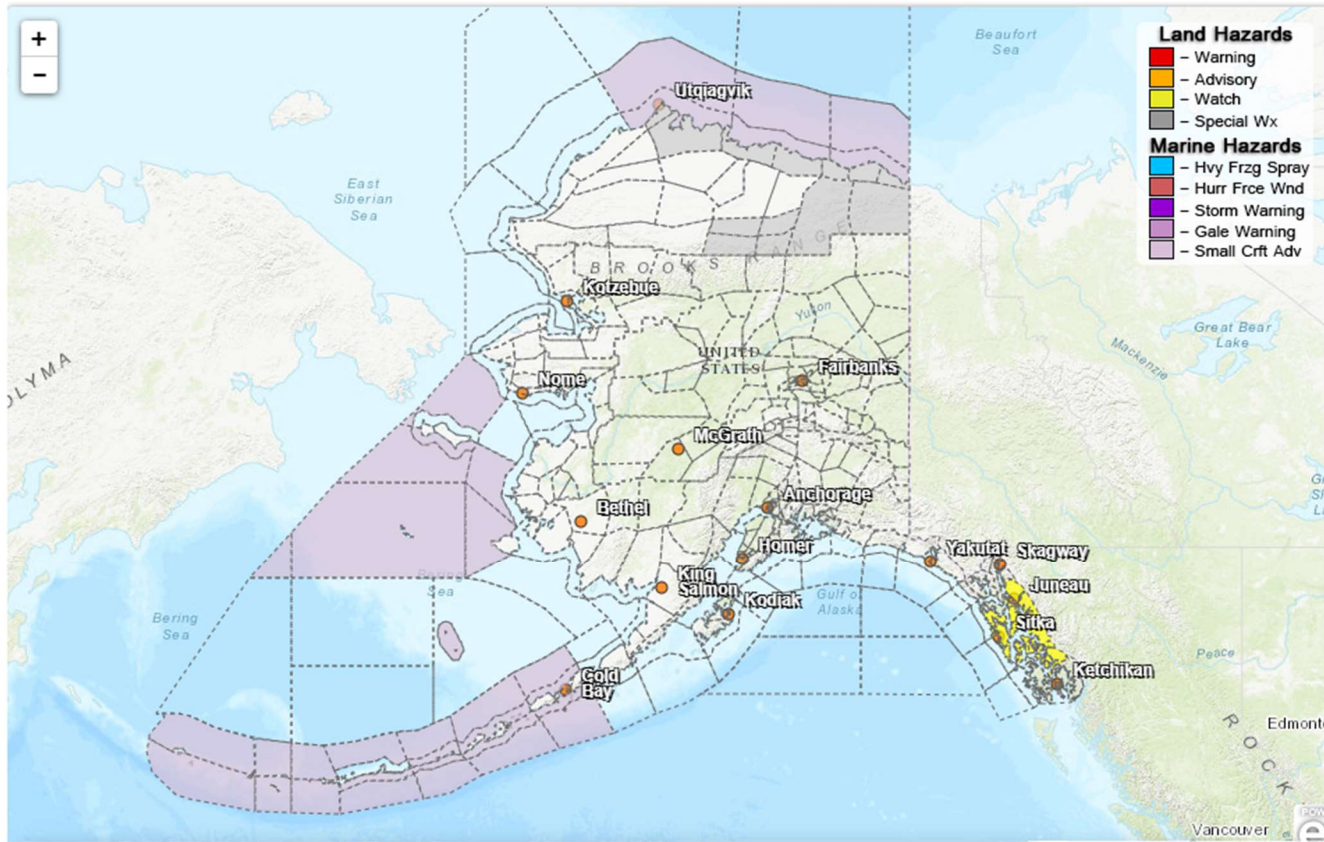
Spills of Oil and Hazardous Substances

The ADEC Spill Prevention and Response page is located at:
[http://dec.alaska.gov/spar/ppr/spill information/response/](http://dec.alaska.gov/spar/ppr/spill%20information/response/)

Alaska Cyber Security Information

State Employees may sign up for cyber security notifications and alerts at
<https://oit.alaska.gov/security>
CISA-Cybersecurity Services and Tools: www.cisa.gov/free-cybersecurity-services-and-tools

Significant Weather:



The following Warnings, Watches, and/or Advisories have been issued:

Special Weather Statement:

- Northern Arctic Coast; Central Beaufort Sea Coast; Eastern Beaufort Sea Coast – elevated surf from Utqiagvik east through Saturday.
- **Central Brooks Range; Romanzof Mountains – 4 inches of snow above 2000 FT through Saturday.**

Flood Warning:

- **City and Borough of Juneau – in effect until 10 AM AKDT this morning.**

Flood Watch:

- City and Borough of Sitka; Admiralty Island; City and Borough of Juneau– in effect from this evening through 10 AM AKDT today.
- **Petersburg Borough; Western Kupreanof and Kuiu Island; City and Borough of Wrangell – in effect until 4 PM AKDT this afternoon.**

Flood Advisory:

- **Petersburg Borough – in effect until 4 PM AKDT this afternoon.**
- **Ketchikan Gateway Borough -in effect until 715 AM AKDT Saturday.**

For more information and the most current weather, go to: <http://www.weather.gov/arh>.

The Next Situation Report will be **September 25, 2023**. A significant change in the situation or the threat level will prompt an interim report. This report is posted on the internet at <https://ready.alaska.gov/sitrep>. To register for email distribution, go to <http://list.state.ak.us/mailman/listinfo/dhsem.situation.report>. Direct questions regarding this report to the SEOC at 907-428-7100 or seoc@alaska.gov